

The Community Counts

A monthly newsletter for Duke Pediatric Blood and Marrow Transplant patients, families and supporters



March 2007

A Spotlight on the Hilliard Foundation

The Hilliard Family Foundation is a private foundation that supports innovative projects in the areas of healthcare, environmental preservation, fine arts and education. Mr. R. Glenn Hilliard and his wife, Heather Prevost Hilliard, initiated the Foundation in 2003. In addition to Glenn and Heather Hilliard, the couple's three daughters, Kathryn Hilliard Stuart, Nancy Hilliard Joyce and Glenn Hilliard Shaw serve on the Board of Directors.

Glenn Hilliard Shaw became a Best Buddy with Duke PBMT in the Fall of 2006. After seeing the work of the Family Support Program in addition to the needs of the transplant families, she invited the Family Support Program to submit a proposal. This September, the FSP submitted a proposal and was granted \$20,000; one of the largest single donations that the Program has ever received. We are so grateful to the Hilliard Family Foundation for their generosity to and faith in our Family Support Program. We will endeavor over the coming year to prove ourselves worthy of their support.



The Hilliard family

March is Child Life Month

Child life professionals strive to reduce the negative impact of stressful or traumatic life events that affect the development, health, and well-being of infants, children, youth, and families. They embrace the value of play as a healing modality, working to enhance the optimal growth and development of children through assessment, intervention, prevention, advocacy, and education. Our child life specialist, Caroline Sweezy, promotes effective coping through the transplant process using play, education, and self-expression.

Some interesting facts about Child Life:

The child life profession has developed since the 1920's to improve health care experiences for children by providing play, preparation and educational programs.

The child life movement experienced rapid growth in the 1970's and 1980's. Many new programs were started during this time.

In addition to hospitals, child life specialists are employed in hospice programs, camps, early intervention programs, courtrooms, dental practices, support/bereavement groups, programs in the community, and private practices.

Child Life Month will be celebrated at Duke March 12-16. To learn more about the child life profession please visit www.childlife.org.

New Kids on the Block



Katie, age 8
Edgewater, MD



Ryan, age 2
Raleigh, NC



Brandi, age 20
Rocky Mount, NC



Patrick, age 18
Winston Salem, NC



Courtney, age 15
Lillington, NC



Casey, age 17
Emmetsburg, MD



Saud, age 11
Saudi Arabia

“New Kids on the Block” features the patients on the 5200 unit who were admitted in the past month. It is our way to honor them and help the other families get to know them.



The Luck of the Irish



What is out on the lawn all summer and is Irish? Paddy O'Frunature

What do you call a fake stone in Ireland? A Sham Rock

Why do frogs like St. Patrick's Day? Because they are always wearing green

When is an Irish Potato not an Irish Potato? When it's a FRENCH fry

What does it mean when you find a horseshoe? Some poor horse is going barefoot

Why do people wear shamrocks on St. Patrick's Day? Regular rocks are too heavy

Why do so many people live in Ireland? Because the capital is always Dublin

What is big and purple and lies next to Ireland? Grape Britain

Valentines Day Party and Dinner

Love is in the air on 5200. To celebrate the day of love, patients enjoyed an afternoon filled with laughter and cookie decorating. The Connection was full of decorations and the air was filled with the smell of freshly baked cookies.

Later in the day the celebration continued with a magical night of delicious food and live music for parents and caregivers. Volunteer Raylene Means arranged for Cinelli's to provide dinner and Foster's Market to provide dessert for parents and caregivers. Rainbow Volunteer Stewart Pierce set the mood with romantic music, played on his guitar. A great time was had by all.



Katie decorates her cookie



Everyone enjoyed the afternoon



Ally hangs out after finishing her cookie



Levi is enjoying all the decorations



Our servers for the evening—Jane, Lindsey and Caroline



The parents enjoyed a night to be wined and dined



Parents, Lisa and Mitch are enjoying a romantic dinner



Two parents, Sandra and Alisa enjoy the company and dinner

Welcome to Kate and Caroline

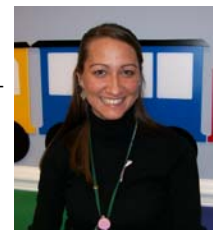
There are a few new faces on the PBMT unit! Caroline Sweezy (who joined the team in July) and Kate Breen have joined the psycho-social team as a child life specialist and our newest social worker. Here is a little information about Caroline and Kate to help you get to know them.

Caroline attended Meredith College and then earned her masters at East Carolina University in Child Development and Family Relations - concentrating in Child Life. Caroline had this to say about her new role, "As a child life specialist in the PBMT program, I hope to help patients and families cope and adjust through the transplant process. I enjoy establishing supportive relationships with patients and families and want everyone to discover positive coping skills that help them get through their own individual experiences." An interesting fact about Caroline is, "One of my favorite things to do is a type of dance called clogging. I started clogging when I was 11 years old. My husband and I even met through clogging and are members of the NC State Wolf pack Clogging Team. Maybe you'll catch a glimpse of me clogging on 5200 sometime. My favorite quote is, "Dance as if no one is watching!"



Caroline Sweezy, Child Life Specialist

Kate initially went to college at a small private school in Kentucky called Asbury College. After she decided that she wanted to study Social Work, she transferred to school back home in Michigan and attended Wayne State University in Detroit for the remainder of undergrad and graduate school. Kate's goal for working on the Pediatric Bone Marrow unit is to provide support and encouragement to children and families as they go through the transplant process. "I'd like to develop relationships with families and advocate for their needs so that they feel like they truly have an ally on their team." An interesting fact about Kate, "I was once hit in the eye with a rotten tomato so hard that it almost detached my retina. Going to college in rural KY, we had an event every year called the Tomato War where the two rival towns would get together in the park on a Saturday morning and have a war with rotten tomatoes. I guess I should have taken the advice of the high school football team and worn a helmet! Needless to say, I hate tomatoes now."



Kate Breen, PBMT Social worker

Please help us to make Caroline and Kate feel welcome!

Activity Passport

Upon admission to 5200, each age-appropriate child receives an Activity Passport, which they “present” when they attend one of the daily group activities. By attending these activities the patient earns a sticker, which can be redeemed for a prize. Katie redeemed her stickers and received a cool heart headband and a whoopee cushion. Katie has been having fun playing jokes with her whoopee cushion. Good job to all the patients who come to daily activities!



Katie is having fun wearing her heart headband and playing with her new whoopee cushion

Winners Circle

We are very grateful to all of the people who help support PBMT families through contributing their time, energy, and resources. We would like to thank:

- * Alice and Guy Jordan for providing playing cards for discharge bags
- * Freelif International and Goji Kids Foundation for their generous donation
- * Chris Howell for his donation of draw and doodle tables in memory of Donovan Rasmussen
- * Pricilla Horvath of Project Linus for her donation of line belts and a quilt for patient welcome bags
- * Candy Walter for her donation of items for the “In Case you Forgot Basket”
- * The family of Nirali Naik for their donation
- * Volunteer Raylene Means for organizing the Valentines Day dinner
- * Foster’s Market for providing desert for our Valentines Day dinner
- * Cinelli’s Restaurant for providing dinner for our Valentines Day dinner
- * Linda Moss and the Pink Smock for their donation of balloons for our Valentines Day celebrations
- * The family of Freddie Finnerty for providing a BBQ lunch for 5200 in honor of his 2 year checkup
- * Jayant DeSai for his donation
- * Chris Sundburg for her donation
- * Stephen Kearney for his generous donation
- * Joseph Philipose for his donation
- * Thomas Amick and TLC Consulting, LLC
- * Abby Tilley for providing Salon Day for PBMT caregivers
- * Candy Walter for providing weekly massage for caregivers

The following groups who contributed to our Community Meals program for the month of February:

West Raleigh Exchange Club
Haw River Christian Church
East Chapel Hill High School
The Little Red Foundation

Trinity Avenue Presbyterian Church
Apex United Methodist Church
Macedonia Baptist Church
St Luke’s Episcopal Church

If we have inadvertently left you off our Winner’s Circle, please let us know!

What We Wish For...

We are in need of the following items:

- ✓ Target and Wal-Mart gift cards
- ✓ Food Lion gift cards
- ✓ Treasure Box toys and Bingo prizes
- ✓ Sample size medications: Tylenol, Motrin, Aspirin, BC Powder, and Tums

If you can donate an item, please contact Rachel Tripp at (919) 668-1203 or by e-mail at rachel.tripp@duke.edu.

The Community Counts is a monthly newsletter produced by the Duke Pediatric Blood and Marrow Transplant Family Support Program, distributed free to patients, their families, volunteers, and staff.

Editors: Jane Schroeder

Lindsey Kearns

Rachel Tripp

Duke PBMT Family Support Program
DUMC Box 3350
2400 Pratt St. Suite 1400
Durham, North Carolina 27710
Phone: (919) 668-1128
E-Mail: schro005@mc.duke.edu

Additional and archived newsletters may be downloaded from our web site:
www.cancer.duke.edu/PBMT/support/family.asp

Printed by Millennium Print Group
Raleigh, NC (919) 852-1117
www.mprintgroup.com

